

Looking back. . .

25 years ago

Renovations that began in the early 1980s at Wheeling Park's White Palace culminated in the opening of an activity/youth center on the main floor in 1984. Originally planned as a teen center, the attractive multi-purpose space, with sturdy wood tables and a food service counter, was soon popular with visitors of all ages. The décor includes large trophy cases that display athletic memorabilia from the city's three original high schools, Wheeling H.S., Warwood H.S., and Triadelphia H.S., Central Catholic High School, and The Linsly School, as well as from the more-recently opened Wheeling Park High School. Improvements allowed this floor of the White Palace to be used for activities year-round for the first time.

50 years ago

Wheeling Park's ice rink opened the day after Christmas, 1959, with a large crowd on hand, many waiting patiently in line to skate on the valley's first artificial rink. Soon, well-attended "learn-to-skate" classes were held and the Wheeling Figure Skating Club was organized; this group of skating enthusiasts also helped financially in the

hiring of a skating professional. Location of the rink, adjacent to the White Palace, was ideal; the basement of the building was converted into a skate-changing room with a refreshment stand, rest rooms, skate rental and pro shop, and a first aid room. Upon its opening, the new facility changed Wheeling Park into a year-round recreation area.

75 years ago

In June 1934, Milton Hine, for more than thirty-one years manager of Waddington Farm, and then Oglebay Park, died at the park home where he spent his entire business life. It would be hard for those associated with Oglebay to imagine the park without Milton Hine. After Waddington became a public facility, Hine made the same conscientious commitment to his new employer, the Wheeling Park Commission (WPC), as he had to his longtime boss, Earl Oglebay. (For many years, the Hine family lived in the pre-civil war building that now houses the WPC main office. Hine's granddaughter, Jean Hickman Crouse, who grew up at Oglebay, now resides in Florida, but returns to Wheeling at least once a year to visit.)

Upcoming Events

May 2009

- 2 Astronomy Day at the Good Zoo
- 23-25 Memorial Day Celebration

June 2009

- 13-14 Kalkreuth Roofing Amateur Golf Classic - Crispin Course
- 13-16 Oglebay Junior Tennis Classic
- 17-21 Senior Tennis Tournament

July 2009

- 3-5 Independence Celebration
- 3 Fireworks at Schenk Lake
- 11-12 Stoney Hollow Men's Golf Amateur - Speidel Golf Club
- 23-26 West Virginia Open Tennis Tournament

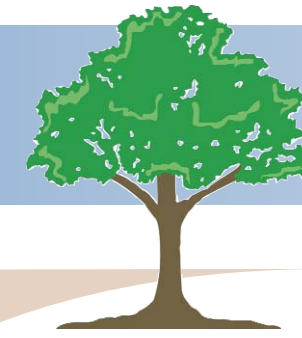
August 2009

- 21-23 Classic Car Show

September 2009

- 5-6 Woodcarver's Show
- 5-7 Labor Day Weekend Celebration
- 6 Wheeling Symphony at the Amphitheater

Among Friends



Spring/Summer 2009 Vol. 13, No. 1

Information and Updates for Friends of Oglebay

Stone Clubhouse Renovations Moving Along

The Legacy of W.E. Stone Remains Important at Wheeling Park

Wheeling Park's Stone Clubhouse, an important hub of activity for forty years, is becoming more guest-friendly with the addition of major heating/air-conditioning improvements (HVAC) and a complete renovation of the first floor restrooms. The work is being completed on a multi-year schedule through the generosity of the W.E. Stone Memorial Trust. Phase 1, consisting of air-conditioning in the club room, golf shop, and locker rooms, was completed in the spring of 2006.

The Stone Clubhouse and pool, constructed in 1968, honors W.E. Stone, one of the parks' greatest benefactors and architect of the WPC. Wheeling Park may have been lost forever had Stone not sparked the drive to secure funds to buy the property with a \$100,000 matching grant in late 1924. His insistence that an independent board should operate the park was a novel concept; then and now, the single most important factor in the successful operation of Wheeling's parks system.

According to park officials, revenue from room rentals increased by fifty per cent after Phase 1 was completed. Phase 2, the refurbishing of the restrooms, began in January and will be completed in the spring of 2009. Improved access to the rest rooms during special events such as wedding receptions, meetings, and parties will be an important result when the renovations are completed.

Phase 3 will be a completion of the HVAC improvements by providing air-conditioning in the Fireplace Room, Trophy Room, and rest rooms. It will also include carpentry work, painting, window treatments, and improved lighting. "Although this work has not yet been scheduled, it will occur in the near future," says Wheeling Park Commission (WPC) CEO Doug Dalby. "These improvements will go a long way in meeting the expectations of our guests."

"W.E. Stone felt strongly about giving back to the community," says current park commissioner Bill Jones about his great uncle. In 1927, the successful businessman and civic leader established a trust fund that created the Wheeling Landscape Commission which still pays for plantings to beautify the city. Nine years later, his gift of \$52,000 matched federal Depression funds for a new swimming pool at Wheeling Park (replaced by the current pool in 1968).



Stone Clubhouse at Wheeling Park

Dear Friends,

In this issue you will notice that foundations and trusts are mentioned in several places. There is a very good reason. The generosity of these trusts supports many programs in the parks and, you might say that we are all the beneficiaries.

We are pleased to tell you about major improvements that are on-going at the Stone Clubhouse at Wheeling Park, primarily financed through the W.E. Stone Trust. It is a perfect time to remember the significant role that W.E. Stone played in the acquisition of Wheeling Park and the formation of the Wheeling Park Commission.

One of the most satisfying programs to me personally is the ten-year old Access to the Parks program. We are grateful for your personal support of this worthwhile endeavor, and to the Chambers Memorial Foundation, the Hess Family Foundation, and the Robinson Parlin Trust who have all recently committed to helping fund Access for the benefit of the youth of the community.

We hope you take the time to visit both Oglebay and Wheeling Park this spring and summer. Take a stroll along the arboretum walks, stop for a sandwich at the White Palace refreshment stand, or enjoy one of the Sunday night programs in the outdoor theater. Enjoy all the recreational activities and programs our generous donors have helped make possible.

Sincerely,

Randy Worls, President
The Oglebay Foundation

Barbara Palmer
Newsletter Editor

The Oglebay Foundation • 304-243-4166 • 800-624-6988, ext. 4166 • www.oglebayfoundation.org

RETURN SERVICE REQUESTED

Wheeling, WV 26003



PRRST STD
U.S. Postage
PAID
Wheeling, WV
Permit No. 43

Commissioners Serve with Distinction through Growth of Wheeling's Parks

First Installment in a Series

In 1924, retailer-philanthropist W.E. Stone virtually assured the purchase of Wheeling Park through his challenge grant, but in making his gift he laid down five conditions; the most important, placing control and management in a non-partisan commission, then as now, the most important factor in the growth of Wheeling's parks system. State Senator Wright Hugus and city solicitor Carl Schmidt drafted the bill creating the WPC, in response to Stone's criteria, and took the proposed bill to the state legislature where it was enacted into law on January 26, 1925.

Today, the organization that Stone envisioned more than eighty years ago – the Wheeling Park Commission (WPC) - operates a physical plant in excess of 2,000 acres – and diligently sets policy for its direction and operation. The original “park fathers” could not have envisioned the size and scope of today's parks system when they set to work in 1925. (Today, the five commissioners, three appointed by the chamber of commerce and two by the mayor of Wheeling, also serve as trustees of The Oglebay Foundation.)

Appointments to the first board included five Wheeling citizens who were influential in making possible the public purchase of Wheeling Park and would now set policy for its development: Otto Schenk and W.P. Wilson, mayoral appointments; J. Sumner Jones, Arthur C. Stifel, and Louis F. Haller, chamber of commerce appointments. Schenk, who chaired the Wheeling Park purchase committee at a critical juncture, was named chairman. Although the first terms were staggered, each commissioner was eligible for reappointment to a full five-year term.

A precedent for longevity and distinguished service began with the charter commissioners. They served a total of 97 years, guiding Wheeling's parks through the Depression years, the World War II years, and – two of them – into the modern era. A.C. Stifel, whose heart remained always at Wheeling Park, retired from the commission in 1952 after twenty-seven years. W.P. Wilson served until his death in 1959, living to see the first phase of Oglebay's lodge – named for him – completed.

To be Continued

Access to the Parks Needed Now More than Ever

Since its quiet beginning in 1999, The Oglebay Foundation's Access to the Parks program has been a shining example of what can happen when generous donors care about the youth of their community. Through the generosity of Friends of Oglebay and several local trusts, all Ohio County youth, regardless of their family financial situation, are able to visit the parks and participate in their favorite recreational activities.

In 2008, almost \$100,000 in user fees was paid by the Foundation to the Wheeling Park Commission (WPC) representing almost 17,000 visits by youngsters in the program. Although the annual number of participants and visits fluctuates according to the county's youth population in any given year, it is a fact that over 45% of Ohio County school children qualify for the Access program.

Unless you specify otherwise, your annual contribution to Friends of Oglebay goes toward the Access program. This year,

in addition, support will come from the J.B. Chambers Memorial Foundation and the Hess Family Foundation through income from the Chambers and Hess endowment cottages which opened in late summer. The Robinson Parlin Trust, which supports local youth programs, has also come aboard as a sponsor. The Oglebay Foundation is very grateful to these three entities.



In 2008, Ohio County youth made nearly 17,000 visits to Oglebay and Wheeling Park through the Access to the Parks Program.

Access to the Parks is certainly unique in the country and is part of the WPC goal to provide more free activities than any municipal parks system of its size in the United States. Although started as a summer program, skating and skiing have been added to the Access program in recent years. It is not too late to make an annual contribution to Friends of Oglebay

that will benefit Access to the Parks if you did not do so at the end of the year. Checks can be sent to The Oglebay Foundation. If you would like further information please call operations manager John Hargleroad at 304-243-4028.

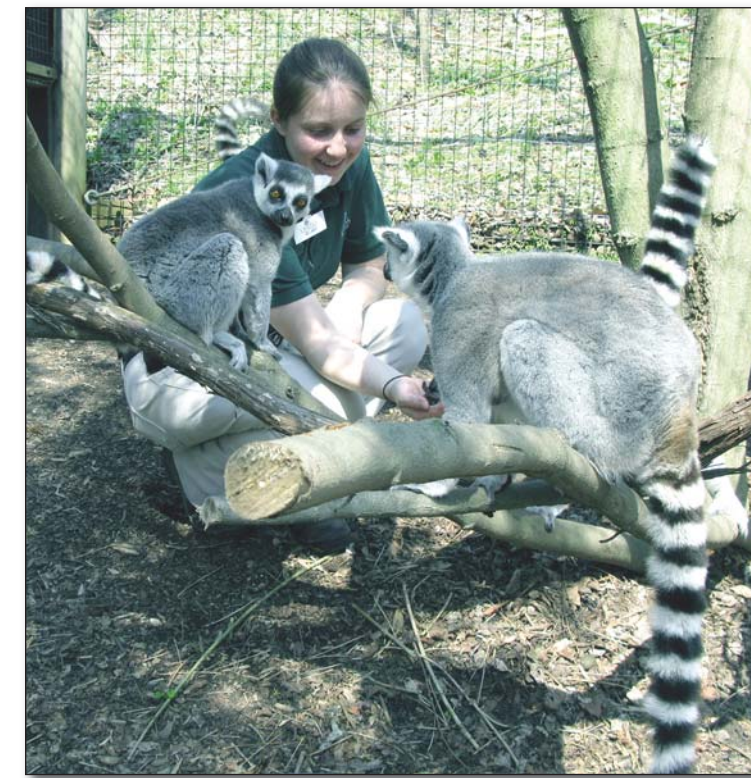
Good Zoo's Accreditation No Small Accomplishment

Many of us in the Ohio Valley take the Good Zoo for granted! We took our children or sent them on school outings, we take our grandchildren, and we visit on special occasions. But, it may never have occurred to you that this gem of a facility is a unique player in the world of global wildlife conservation as shown by its recent re-accreditation by the prestigious Association of Zoos & Aquariums (AZA). “Oglebay's Good Zoo was granted AZA accreditation because it meets high standards in every aspect of its operations,” said AZA President and CEO Jim Maddy. “Wheeling should be proud to have one of the top zoos in North America as a valuable community asset.”

The independent accreditation process includes a detailed application and meticulous on-site inspection by a team of trained professionals. The inspecting team observes areas such as animal care, keeper training, safety (for animals AND people), educational programs, conservation efforts, veterinary programs, financial stability, risk management, visitor services, and more. Top officials are also interviewed at a formal hearing. An accreditation visit occurs about every five years, and only accredited facilities may be members of the AZA. Just 10% of the 2,000 licensed zoos in the US are accredited by the AZA. The mission of the AZA is to establish, uphold, and raise industry standards through self-evaluation, on-site inspection, and peer review.

When director Penny Miller learned of the re-accreditation in late September, she was quick to praise several groups who contribute to the success of the Good Zoo. “Our talented and caring staff work very diligently to make our facility a special place,” says Miller. “Also, our loyal supporters who belong to Good Zoo Friends help keep us financially viable. Last, but not least, our many donors over the years, some acknowledged and some who wish to remain anonymous, have helped finance building and renovation projects, support staff training, and provide new programs and displays. All of you have a hand in our success.”

Founded in 1924, the Association of Zoos and Aquariums is a non-profit organization dedicated to the advancement of zoos and aquariums in the areas of conservation, education, science, and recreation. AZA encourages you to look for its logo whenever you visit a zoo or aquarium as your assurance that you are supporting an institution dedicated to providing excellent care for animals, a great experience for you, and a better future for all living things. For more information, visit www.aza.com



Zookeeper Melanie Wade feeds the lemurs (above) and red panda (below) at the Good Zoo at Oglebay. Penny Miller, Good Zoo Director, says her talented and caring staff make the zoo a special place.



Members of Good Zoo Friends Have Added Bonus

If you or your family belong to Good Zoo Friends, a membership that allows you unlimited access to Oglebay's zoo, and reduced admission for special events there, did you know you get an added bonus for free or reduced admission at 107 other zoos? When you join Friends of the Good Zoo you will receive this information. Contact the zoo for additional information at 800-624-6988 or 304-243-4000.

Sunday Summer Entertainment Series Set for 2009

On Sunday evenings between Memorial Day and Labor Day, there will be free entertainment in the Kuchinka Amphitheater at Oglebay from 7:00 – 9:00 p.m. courtesy of the Elizabeth Stifel Kline Foundation. Bring your family and friends, a blanket and picnic basket if you wish, and enjoy the shows. Performances will be announced soon!