

Oglebay's Winter Festival of Lights to Shine November 9, 2012 to January 6, 2013

With all major displays now outfitted with energy-saving LED lights, this year's Winter Festival of Lights (FOL) show will open at dusk on November 9, 2012 and continue through January 6, 2013. The popular winter event, now in its 27th year, will feature several new attractions, including a carnival-themed display and the addition of a volcano to the popular Dinosaur Dell.

Since 1985, the winter show has been an economic boon to Oglebay and the Wheeling community. It has meant the retention of staff at Wilson Lodge and other venues in the winter, it has increased visitors to the Good Zoo, the Mansion Museum, and Wheeling Civic Garden Center, and it has pumped additional dollars into area hotels, restaurants and service stations.

If you have never stayed at Wilson Lodge during FOL, this may be the year you want to treat yourself. The 271-room facility will be festively decorated for the season. Just imagine enjoying the following: nightly cordial gatherings, our famous holiday buffet, holiday shopping and glassblowing demonstrations, the West Spa and skiing and snowboarding, weather permitting.



Call 800-624-6988 or visit us on the web at www.oglebay-resort.com.

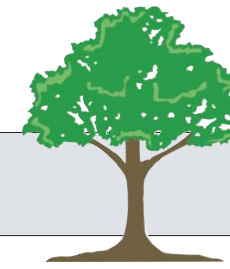
Visit our online marketplace for gift cards & FOL merchandise! Go to shop.oglebaytraditions.com.



Among Friends

Fall 2012, Vol 16, No. 2

Information and Updates for Friends of Oglebay



Dear Friends,

Fall is always an exciting season in the parks. We look forward to several major events and it is a wonderful time to get in a little more golf, tennis or just old-fashioned walking in the crisp autumn air.

In this issue, we are pleased to tell you about a new partnership that will benefit the Oglebay Stables and a new endowment for the playground. On a sadder note, we mourn the loss of parks benefactor Al Higley whose family has visited Oglebay for extended stays since 1955.

Some of our supporters are long gone from Wheeling, but will never forget their days in the parks while living here. Our friend and neighbor, Bill Hogan, shares thoughts from far-off Nepal written to him by his daughter, Brady.

Last, but not least, the Access to the Parks program concluded another successful summer season, with thousands of visits by youngsters who might not otherwise be able to use our facilities on a regular basis. We thank you for your support of this program and everything you have done and will continue to do to keep our parks For Everyone Forever.

Sincerely,

Randy Worls
The Oglebay Foundation



Oglebay and Bethany Announce Partnership to Benefit Equestrian Programs

A new partnership will benefit both Bethany College and the Oglebay Stables and support both the college's Equine Studies program and the resort-park's riding program. Bethany will immediately house its off-campus equestrian facilities at the Oglebay Stables, which will serve as boarding space and a learning lab in addition to the College's own facilities. It should be a financial win-win situation for both entities.



Among other opportunities, Bethany College's growing Equine Studies Program offers students a chance to major in equine management and pre-veterinary medicine.

With the added facilities and space, Bethany now holds the potential to host Intercollegiate Horse Show Association competitions. The Bethany College Equestrian Club fared well in recent competitions, competing with larger institutions such as West Virginia University and Seton Hall.

"We are pleased with the benefits and opportunities our partnership with Bethany will provide to area residents, as well as Oglebay guests," says Rod Haley, vice president of operations for Oglebay, "There will be improvements at the stables and we will continue to provide riding lessons, camps and pony rides."

The riding tradition at Oglebay goes back to Waddington Farm days. Earl Oglebay's grandson, Courtney Burton, was an avid polo player during his lifetime and often wintered Oglebay stable horses at his estate in Gates Mills, Ohio.

Bethany College, located less than 30 minutes from Oglebay, has a picturesque 1,300 acre campus. Founded in 1840, it is the oldest private college in West Virginia. Earl Oglebay graduated from Bethany College in 1871 and it is thought that he fell in love with Waddington Farm when he traveled as a young man between his home in downtown Wheeling and Bethany.



RETURN SERVICE REQUESTED



PRSRRT STD
U.S. Postage
PAID
Wheeling, WV
Permit No. 43

The Oglebay Foundation • 304-243-4166 • 800-624-6988, ext. 4166 • www.oglebayfoundation.org

A Timeline of Golf at Oglebay and Wheeling Park - The Later Years

1965 Park commissioners approved the hiring of golf course architect Robert Trent Jones, Sr., for the "Speidel project," an 18-hole course to be located on the 300 acre site encompassing the Speidel/JoBetty Farm property on the north side of Oglebay. Construction began in earnest in the spring of 1968.

1970 The front nine of the Speidel Championship course opened in June, but there would be 10 more years of development and landscaping at the "monster course" on the hill. Most of the work on the back nine was accomplished by late 1971.

1973 The first five deluxe Speidel cottages opened above the 11th tee; they were designed to complement the new course and appeal to golf groups.

1973 Extensive renovation work on the Wheeling Park course, partially funded by the Wheeling Park Men's Golf Club, was carried out; In addition to a tee-rebuilding project, a new irrigation system was installed.

1974 Carole Jo Skala won the inaugural Wheeling Classic at Oglebay, a Ladies Professional Golf Association (LPGA) tournament. The popular event, sponsored by the Wheeling Area Chamber of Commerce, used many local volunteers during its eleven year run.

1982 A makeshift wooden building on the knoll at Speidel was replaced with a spacious wood and fieldstone clubhouse; the facility honors the former editor of the Wheeling News-Register Harry Hamm (1923-1991), an avid golfer and vocal champion of Wheeling's parks.

1989 The pro shop at the Hamm Clubhouse was named one of America's 100 Best by the magazine Golf Shop Operations.

1994 The Caddy Camp main building was remodeled in memory of the late Jack Grimes by his daughter Judy Grimes Holloway. Grimes, who served as advertising director for the Wheeling Steel Corporation in the 1930s and 40s, wrote a golf column for the Wheeling News-Register for many years and was

an honorary lifetime member of the Oglebay Men's Golf Club.

1997 Fill from a near-by construction project was donated to Wheeling Park to eliminate a water hazard at Hole 5. Other improvements were completed that made for a more playable area.

1998 A Player Development Project grant helped to promote beginner golf and improve the Jr. Golf program. It also funded the re-building of four forward tees at Crispin, replacement of the tees at the Par 3 and 18 new tee mats at the driving range.

1999 The Jones Golf Driving Range, with grass tees and over one acre of natural grass, opened at Speidel. It honors the late Wheeling Park Commission chair, Wilbur S. Jones.

2000 After several years of planning and construction work, the Arnold Palmer Signature course at Speidel opened in May. Owned by The Oglebay Foundation, the course is dedicated to the late Wheeling architect Archibald Klieves after a major gift by his daughter, Jane Klieves Sauder.

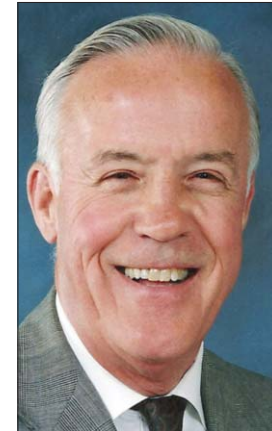
2001 The late Lloyd B. Newcomer, Jr., endowed the No. 1 hole at the Crispin course. "I am pleased to play a small part in maintaining the quality of the course," he said.

2005 Improvements were started at the Wheeling Park course through the generosity of Wheeling resident Stuart Bloch; these include upgrading of the irrigation system, tee improvements, drainage improvements and preparations for golf car paths.

2010 An intensive drainage improvement program on the bunkers and key areas of the Palmer/Klieves course begins. This work will be completed in 2013.

2012 After more than 40 years of operation, a complete bunker restoration program was started on the Jones course at Speidel.

Parks Staff Remembers Generosity of Al Higley (1928 - 2012)



Albert M. Higley enjoyed life – and his family enjoyed Oglebay. So much so that the successful Ohio businessman, and his wife Bev, provided funds for three new deluxe cottages in the 1980s when the Wheeling Park Commission (WPC) was in the midst of an important cabin-rebuilding program. The cottages are Juniper (1983), Hawthorne (1984) and Ivy (1986).

It was with much sadness that The Oglebay Foundation and the WPC learned of his death on July 3. As important as Al Higley was to the development of Oglebay's overnight facilities, he left an even bigger impression on the greater Cleveland area. As chief executive of the Albert Higley Company (construction and general contracting), Higley supervised work on many major projects, including numerous buildings at Case Western Reserve and Cleveland State Universities, and many northern Ohio sports and medical venues. Although he was a busy man professionally, he found time to chair the board of the American Red Cross Chapter of Greater Cleveland and he received many awards for his community service.

In the Fall 2000 issue of Among Friends, Bev Higley recalled early vacations at Oglebay. "Our kids loved the playground, the boats and the zoo," she said. "We are a four-generation Oglebay family as our parents also enjoyed coming here." At that time, Al Higley chimed in to say "During all the stages in our lives, this has been a great place to be; there is so much to do here for all ages." Al Higley will be missed.

Kontogiannis Family Playground Dedicated at Oglebay

Through the generosity of George J. Kontogiannis, a friend of the parks for many years, the playground at Oglebay has been refurbished and a new safety surface added under each piece of equipment. Most importantly, the successful architect, a Yorkville, Ohio native, has also set up an endowment fund to provide for future upkeep of the playground.

Kontogiannis, a 1963 graduate of the Ohio State University, founded Colonial American Development Corporation which, together with his development, construction and management company, employs 200 people and owns and operates 4,400 apartment units in Ohio, West Virginia and south Florida. Two of his apartment complexes, Oglebay Village and Wheeling Station, are located on the northeast side of the resort-park.

"We are grateful for George Kontogiannis' on-going support of Oglebay," said Randy Worls, chairman of The Oglebay Foundation, at the July dedication. "In 1996 Kontogiannis gave more than 70 acres of land to the Foundation and that acreage now comprises half of the Arnold Palmer Signature/Klieves Golf Course.

The playground and Hess Shelter anchor the children's center area of Oglebay; together with the mini-golf course and boating and fishing on Schenk Lake, it is a popular gathering place for families with school-age youngsters.

An Email of Oglebay Memories from Nepal



The following excerpts from an email from Nepal were shared by retired Wheeling businessman Bill Hogan. His daughter Brady, while living in Kathmandu, set in the South Asia Himalayas, recalled

scenes from her youth while growing up in Wheeling and at Oglebay. The Hogans were avid tennis players.

..."I'm sure Oglebay keeps changing, but I think it'd be fun to stay there (again)."

"(I) remember those early years of day camp...hiding my bathing suit in the chimney of the fireplace at the tennis courts, saying I forgot it so I wouldn't have to take early morning ice baths (in the outdoor pool)."

"Collecting lost golf balls and selling them to golfers in order to buy popsicles."

"Endless hours hitting tennis balls against the backboard – a far more skilled player than me."

"Roaming the park that I knew like our back yard."

"...green wooden benches, draft beer and sodas in Oglebay plastic cups. The bees hovering about the temporary concession stands drawn by the sticky sweet pools of spilled drinks and condiment trays of relish, ketchup and onions that weren't really onions."

"Tina (sister) and I playing doubles. Me, not a competitive bone in my body, driving her crazy. The older kids, almost heroic in their abilities to play (tennis)."

"Signing in with a stubby pencil tied to a string – endless hours at that counter with other teens working the (tennis) shop. The pop machine banging and clanging in the background delivering cold drinks and the snack machine with chips and crackers, the only venues for consumerism."

"On and on...it was a great place to grow up."

The Oglebay Foundation thanks Brady Hogan for sharing her memories.

Partnerships and Sponsorships Important to Financial Stability

The generosity of Friends, through partnerships and sponsorships, is important to the development and continued operation of Wheeling's parks. While individual support has been the cornerstone of philanthropy that has helped the parks to grow, there are also ways that the companies you work for and the organizations you belong to can share in the continued success of the parks system.

A recent example is the partnership between Bethany College and the Oglebay Stables that will financially benefit and improve the riding programs of both organizations. Another example is the Health Plan of the Upper Ohio Valley's support of Oglebayfest. There are many opportunities for partners and sponsors at both parks and we urge you to contact The Oglebay Foundation to discuss these possibilities.

The director of Oglebay's Good Zoo, Penny Miller, says that both local and national brands benefit from their exposure to potential customers and they also support the zoo's educational mission. Past partners have included Pepsi, McDonald's, Bob Evans, Fed Ex, UPS and many restaurants throughout the area. "These partnerships allow the zoo to offer our visitors richer and more varied exhibits and events, while helping the businesses gain more exposure to our customers, namely families with children," Miller adds.

There has also been great cooperation between private organizations and the Wheeling Park Commission that have enabled park visitors to enjoy a wide range of events throughout the years, some of them free to the public. Some examples of these partnerships are with the Wheeling Civic Garden Center, Oglebay Institute, the Wheeling Symphony, and the many clubs that are organized around park recreational facilities. Oglebay and Wheeling Park would not be the comprehensive recreation areas they are today without these liaisons and we are grateful for them.

If your company or organization would like to discuss a partnership or sponsorship at either park, please contact Randy Worls to discuss your ideas. He can be reached at (304) 243-4001 or you can call The Oglebay Foundation at (304) 243-6144.



The Kontogiannis family gathers for the playground dedication ceremony.

